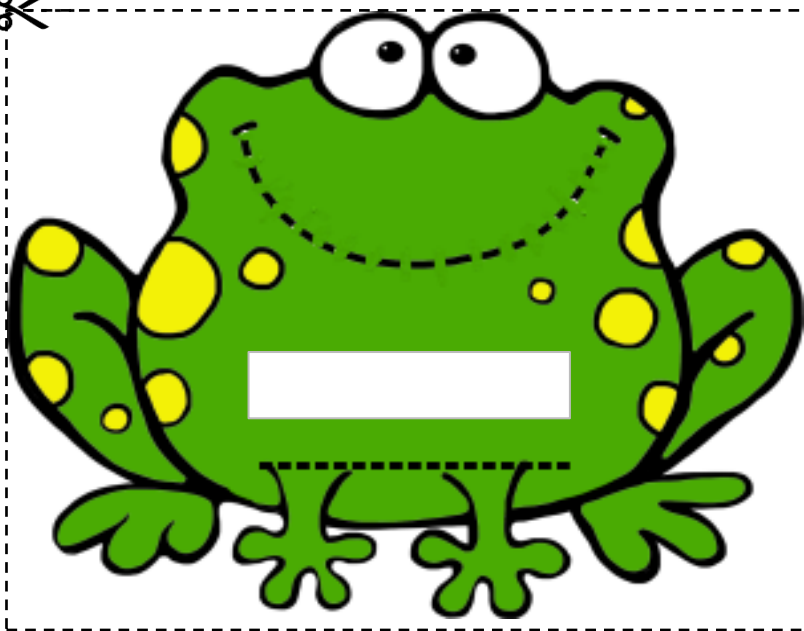
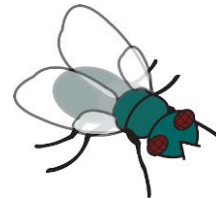
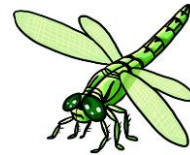


Name: \_\_\_\_\_

Date: \_\_\_\_\_

This worksheet goes along with the song : There was an old frog which swallowed a fly (sing to the tune of "There was an old lady who swallowed a fly.")

Instruction: Cut out the frog and the strip of insects.  
Teacher/Parent: Help to cut a slit along the dotted lines of the frog's mouth and the bottom line. Insert the strip in between the two slits. Let your children pull the strip up as they sing along with the song.



kiddyhouse.com



**Pull down**